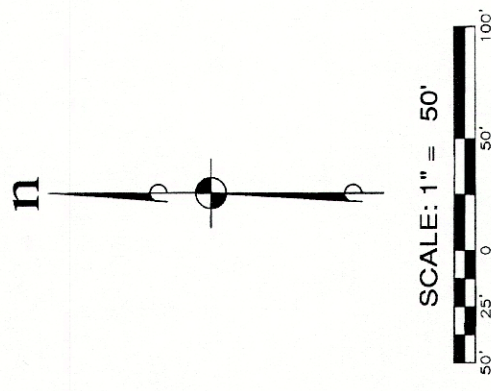


THE LEGACY AT SUNCADIA SUNCADIA - PHASE 1 DIVISION 6

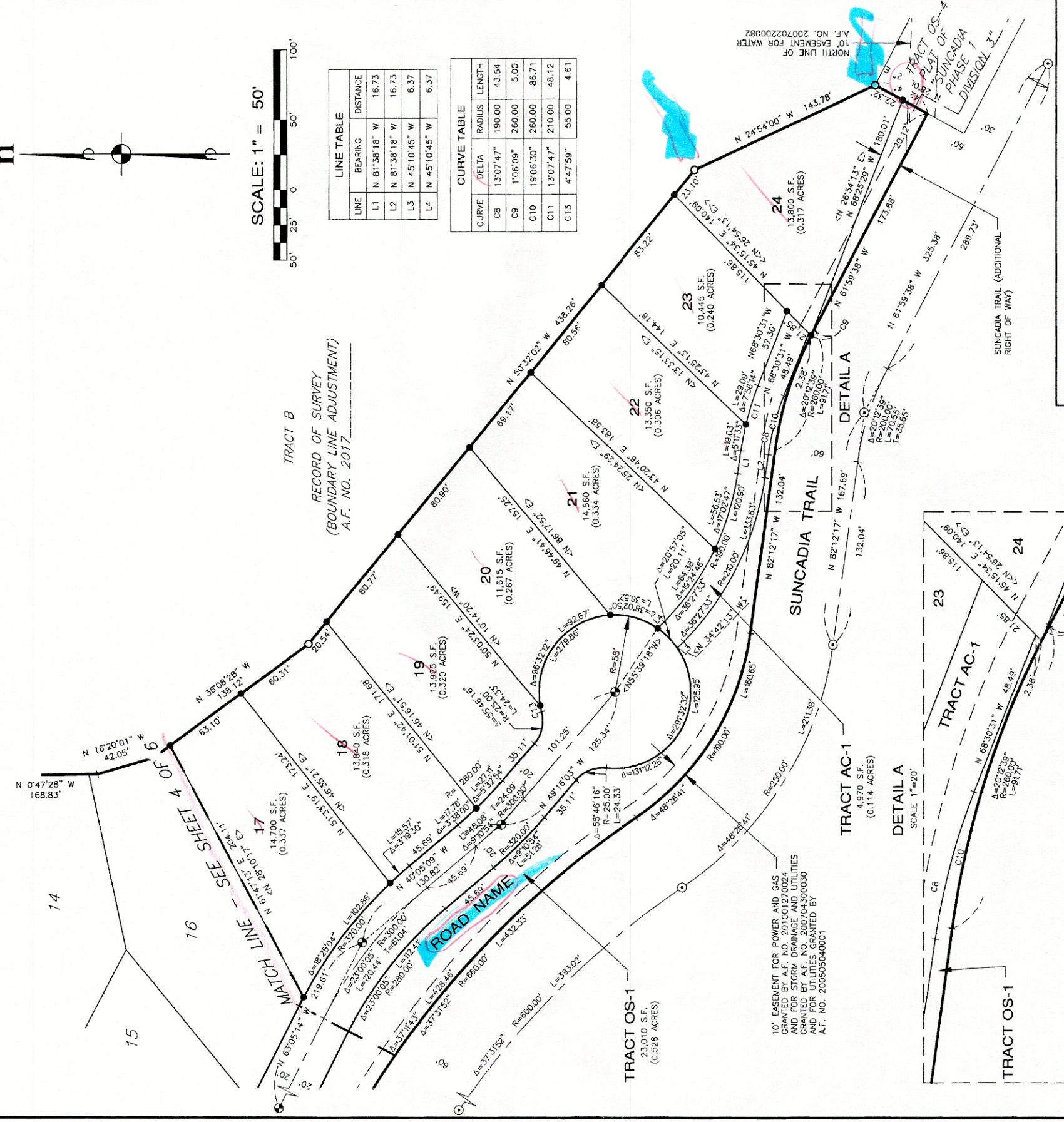
A PORTION OF SECTIONS 19 AND 20, TOWNSHIP 20 NORTH, RANGE 15 EAST, W.M.
KITITIAS COUNTY, WASHINGTON

AUDITOR'S REFERENCE



LINE	BEARING	DISTANCE
L1	N 81°38'18" W	16.73
L2	N 81°38'18" W	16.73
L3	N 45°10'45" W	6.37
L4	N 45°10'45" W	6.37

CURVE	DELTA	RADIUS	LENGTH
C8	13°07'47"	190.00	43.54
C9	1°06'09"	260.00	5.00
C10	19°06'30"	260.00	86.71
C11	13°07'47"	210.00	48.12
C13	4°47'59"	55.00	4.61



10' EASEMENT FOR POWER AND GAS GRANTED BY A.F. NO. 201001270024 AND FOR STORM DRAINAGE AND UTILITIES GRANTED BY A.F. NO. 200506160038 AND FOR UTILITIES GRANTED BY A.F. NO. 200505040001

10' EASEMENT FOR WATER GRANTED BY A.F. NO. 200702200082

TRACT AC-1
4,970 S.F.
(0.114 ACRES)

TRACT OS-1
23,010 S.F.
(0.528 ACRES)

TRACT OS-1
23,010 S.F.
(0.528 ACRES)

TRACT OS-1
23,010 S.F.
(0.528 ACRES)

TRACT OS-1
23,010 S.F.
(0.528 ACRES)

TRACT OS-1
23,010 S.F.
(0.528 ACRES)

TRACT OS-1
23,010 S.F.
(0.528 ACRES)

TRACT OS-1
23,010 S.F.
(0.528 ACRES)

TRACT OS-1
23,010 S.F.
(0.528 ACRES)

TRACT OS-1
23,010 S.F.
(0.528 ACRES)

RECORDING CERTIFICATE

FILED FOR RECORD AT THE REQUEST OF KITITIAS COUNTY BOARD OF COMMISSIONERS
THIS _____ DAY OF _____ A.D., 2017, AT _____ MINUTES PAST
_____ O'CLOCK _____ M., AND RECORDED IN VOLUME _____ OF PLATS, ON
PAGES _____, RECORDS OF KITITIAS COUNTY, WASHINGTON.

BY : _____
DEPUTY COUNTY AUDITOR
KITITIAS COUNTY AUDITOR

AUDITOR'S REFERENCE: _____



ESM CONSULTING ENGINEERS LLC
33400 8th Ave. S, #205
Federal Way, WA 98003
www.esmcivil.com

FEDERAL WAY (253) 838-8113
EVERETT (425) 297-9900

Civil Engineering
Public Works

Land Surveying
Project Management

Land Planning
Landscape Architecture

DATE : 2017-04-10
DRAWN BY: C.A.F./R.F.G.
JOB NO.: 998-753-016-0002
SHEET 5 OF 6

LEGEND

- ⊙ SURFACE BRASS CAP, STAMPED "L.S. 35142" SET IN CONJUNCTION WITH THE PLAT OF "SUNCADIA - PHASE 1 DIVISION 2" (PLAT ALTERATION) A.F. NO. 200506160038
- ⊙ SET SURFACE BRASS CAP, STAMPED "L.S. 44925"
- FOUND CORNER AS NOTED
- SET 5/8" REBAR WITH CAP STAMPED "ESM LLC 35142 44925". IN THE EVENT THAT A NON-REMOVABLE OBSTACLE PREVENTS THE ACTUAL PROPERTY CORNER, A STAMPED 2" DIAMETER BRASS CAP SHALL BE SET AT THE PROPERTY CORNER. THE CAP SHALL BE OFFSET TO THE ACTUAL CORNER WITH THE DISTANCE TO THE ACTUAL CORNER NOTED THEREON.
- Δ DELTA
- R RADIUS
- L ARC LENGTH
- (R) RADIAL BEARING
- < > RADIAL BEARING AT LOT CORNER
- OS-1 OPEN SPACE TRACT - DESIGNATION NUMBER
- S-1 SERVICE TRACT - DESIGNATION NUMBER
- AC-1 ACCESS TRACT - DESIGNATION NUMBER